



# NIRMALAGIRI COLLEGE

RE-ACCREDITED BY NAAC WITH A++ GRADE

Affiliated to Kannur University

Nirmalagiri, Kannur, Kerala, India 670701 | [www.nirmalagiricollege.ac.in](http://www.nirmalagiricollege.ac.in)

## BEST PRACTICE

### 1. STEP-V.2 – Strategised Target Excellence Programme Version 2





## **STEP-V.2 – Strategised Target Excellence Programme Version 2**

The Strategised Target Excellence Programme Version 2 (STEP-V.2) at Nirmalagiri College is designed to foster the holistic development of students through various structured programs. These initiatives aim to enhance academic performance, personal growth, and inclusivity among all students, including those with disabilities.

### **Components of STEP-V.2**

#### **1. Induction Program:**

- Aimed at new students to acclimatize them to college life.
- Covers essential skills and knowledge required for academic success.

#### **2. Special Programs for Students:**

- Tailored workshops and seminars focusing on skill development.
- Encourages participation in extracurricular activities.

#### **3. Remedial Classes:**

- Designed for students needing additional academic support.
- Focuses on core subjects to improve understanding and performance.

#### **4. Special Programs for Disabled Students:**

- Inclusive initiatives that provide tailored support and resources.



- Ensures equitable access to educational opportunities.

### **5. Orientation Programs:**

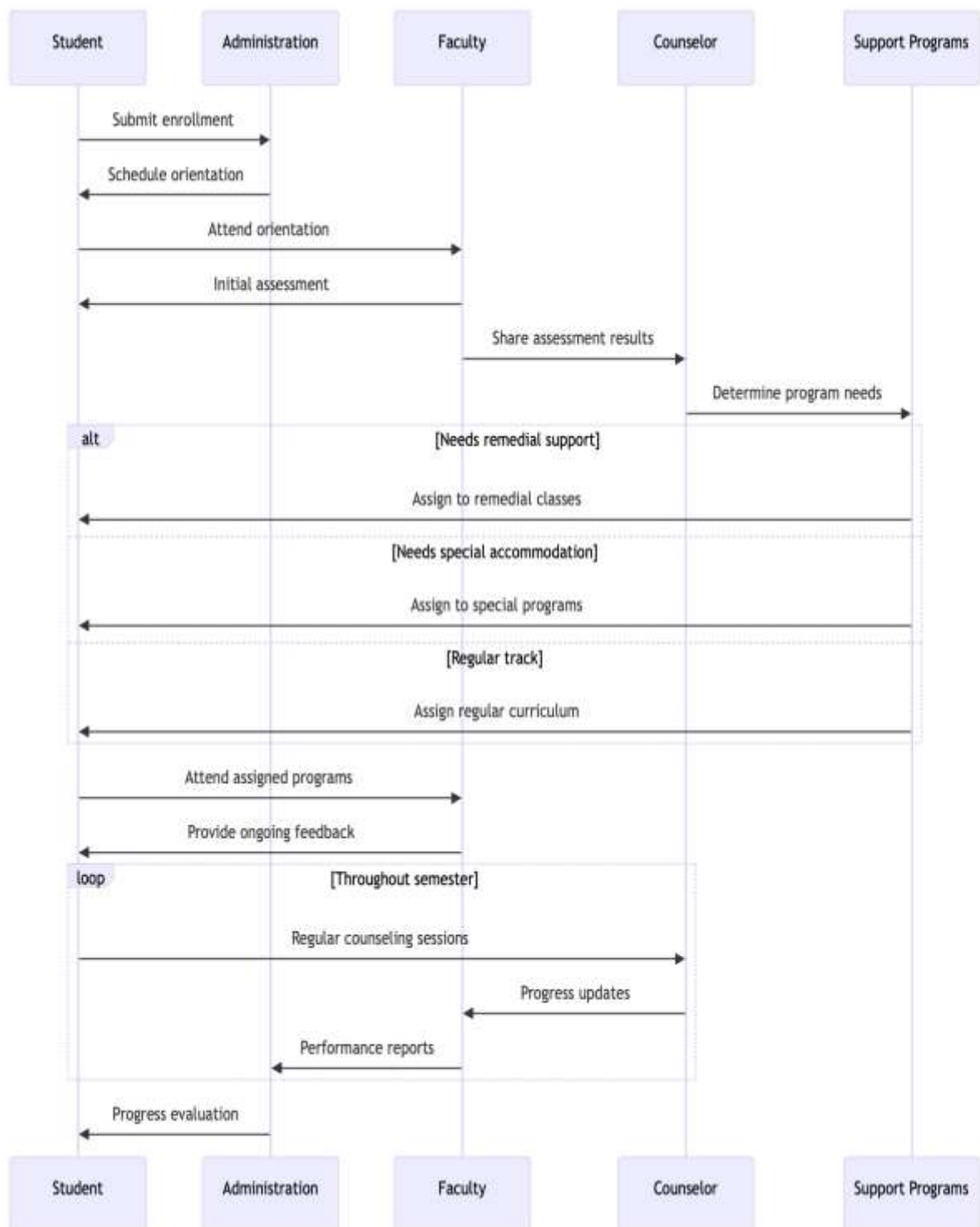
- Introduces students to college policies, facilities, and available resources.
- Aims to bridge the gap between high school and college expectations.

### **Objectives of STEP-V.2**

- To create a supportive environment that promotes learning and personal growth.
- To enhance academic performance through targeted interventions.
- To ensure inclusivity by providing specialized programs for all student demographics.



## SEQUENCE DIAGRAM OF ACTION PLAN





## PICTURES OF PROGRAM



Induction Programme for students



Special Training for Academically Backward Students



Special Training for Academically Backward Students-Discussion & Learning



Internal Evaluation



Remedial classes



Special Training



Orientation Programme for Students



Special training Programme